

Law Lab: Information management

Session sponsored by



Roberta Di Nanni, Senior Legal
Product Expert, Luminance



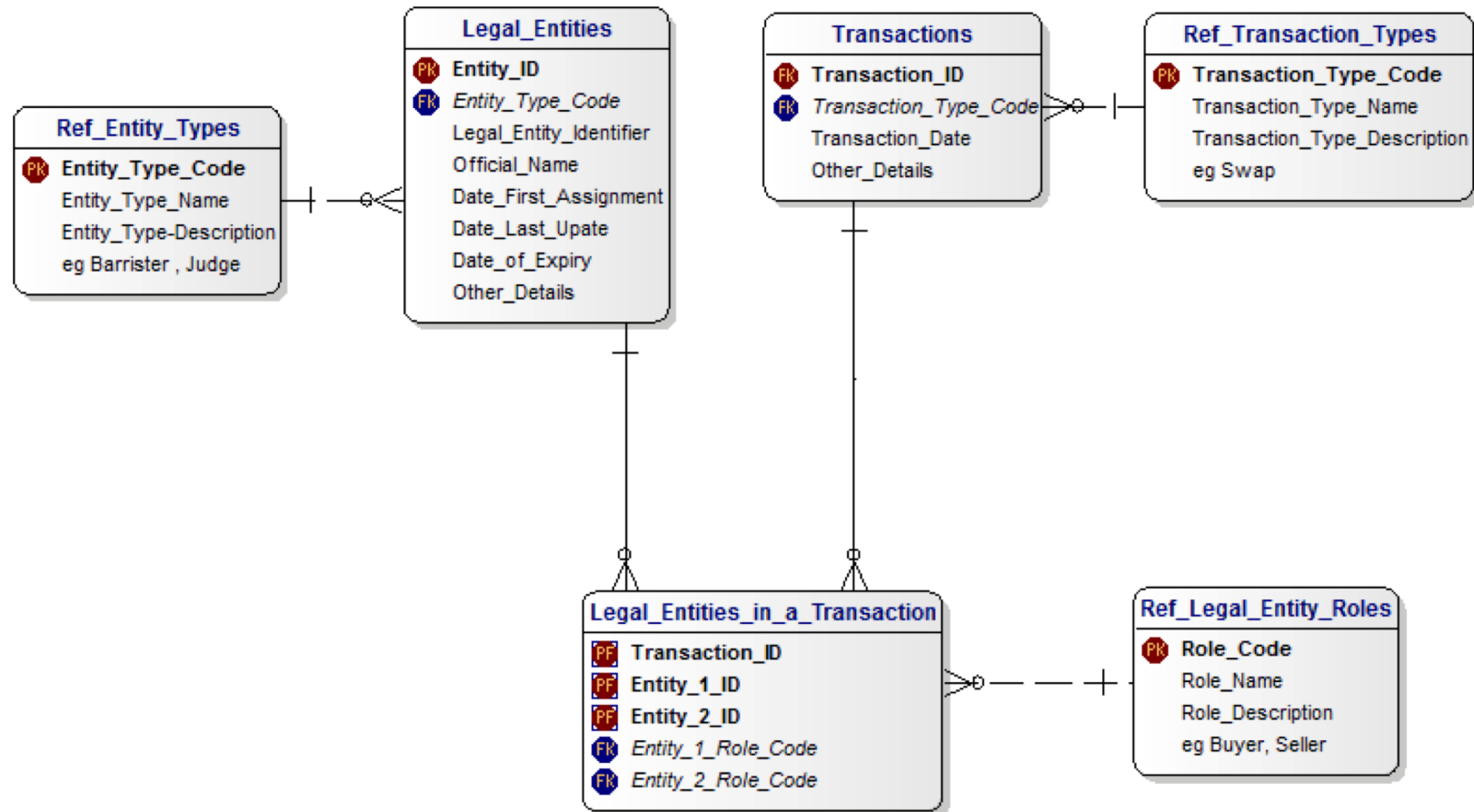
Laura Pavese, Senior Litigation
Manager, Hewlett Packard
Enterprise



Jessica Jacob, Co-founder,
CEO and CLO, Komply LLC

Information Management

1. A common language – data models



Internal

vs.

External



Regulatory compliance and getting a hold on your data



Information Management

1. A common language – data models
2. Use case – litigation management

Case Management

Information Technology makes a difference

React quickly, be resilient and provide case assessment and alternative resolution scenarios for business management decisions. This is an ongoing effort during the lifetime of a litigation.

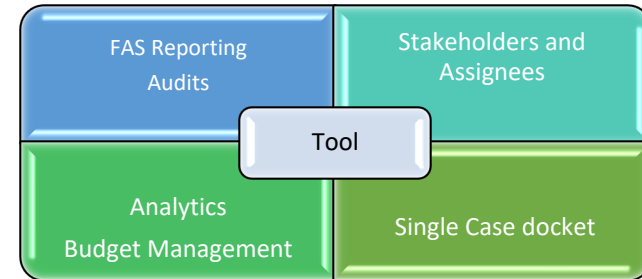


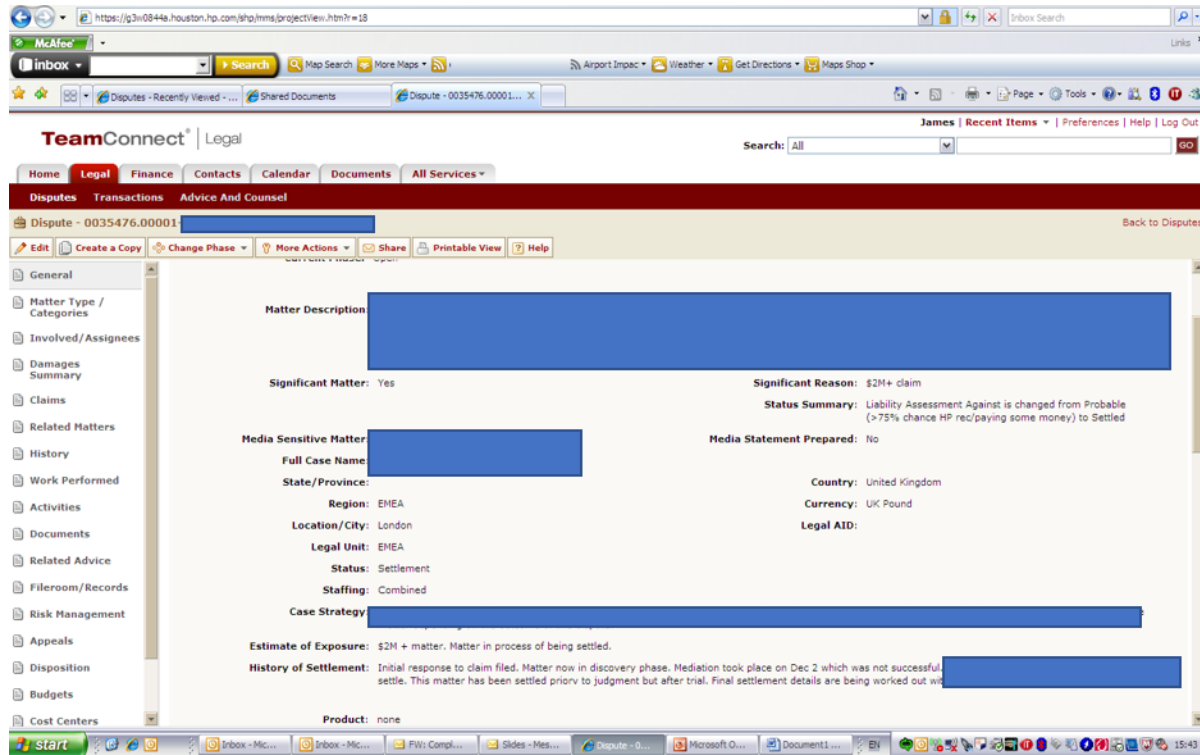
A single data source + analytics valuably support a quick access to company's risk profile at a given time:

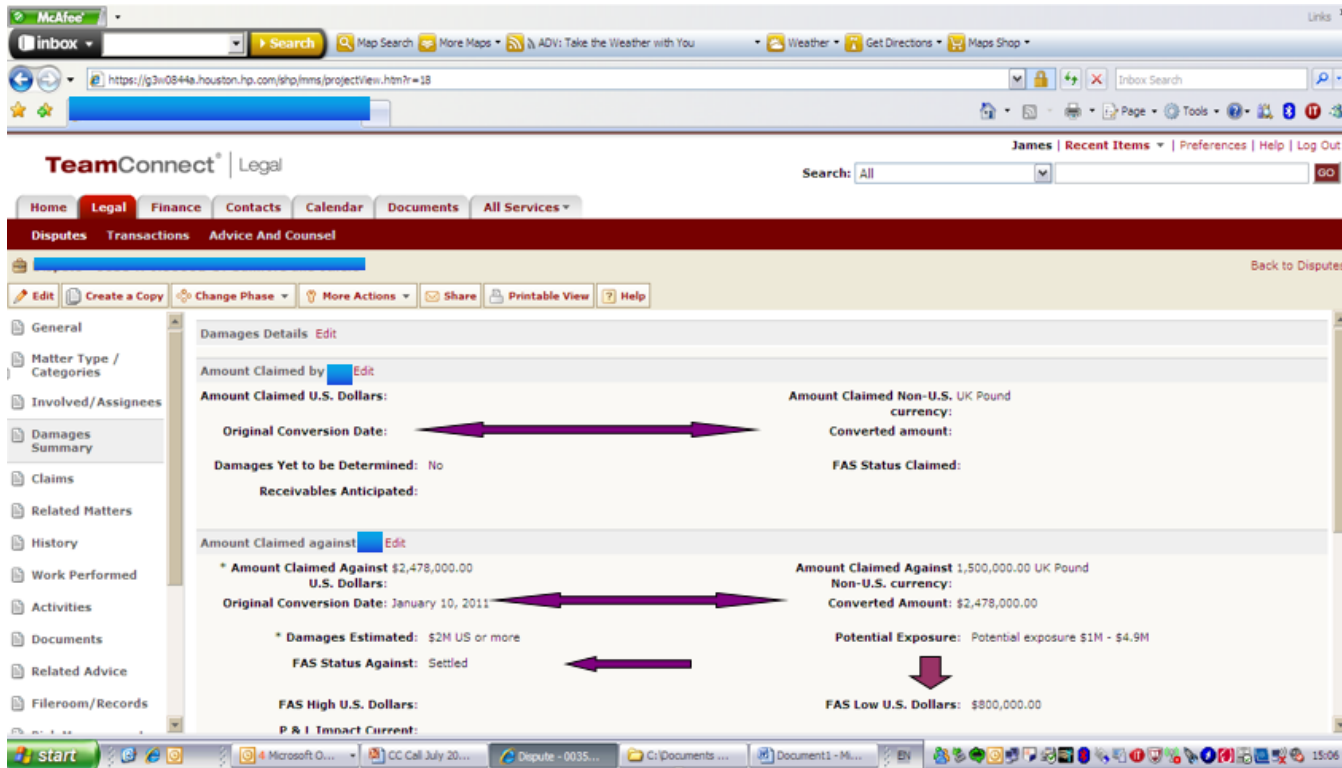
- **Cases** across all jurisdictions = insight to company litigation trends and threats (“*ne bis in idem*” concept)
- **Financial** assessment (claim exposure vs. case budget)
- Litigation **outcome** vs. **settlement**
- Short term and long term **Strategy**
- Case **Classification** (Significant, Media Sensitive)



Case Management stands on a thorough case risk assessment which relies on data, expertise and judgement.







The screenshot shows the TeamConnect Legal interface. The top navigation bar includes Home, Legal, Finance, Contacts, Calendar, Documents, and All Services. The left sidebar lists various categories like General, Matter Type / Categories, Involved / Assignees, Damages Summary, Claims, Related Matters, History, Work Performed, Activities, Documents, Related Advice, and Fileroom / Records.

The main content area displays the 'Damages Details' for a claim. It includes fields for 'Amount Claimed by', 'Amount Claimed U.S. Dollars', 'Original Conversion Date', 'Damages Yet to be Determined', 'Receivables Anticipated', 'Amount Claimed against', 'Amount Claimed Against', 'Original Conversion Date', 'Damages Estimated', 'FAS Status Against', 'FAS High U.S. Dollars', and 'FAS Low U.S. Dollars'. The interface also shows 'Amount Claimed Non-U.S. UK Pound currency' and 'Converted amount'.

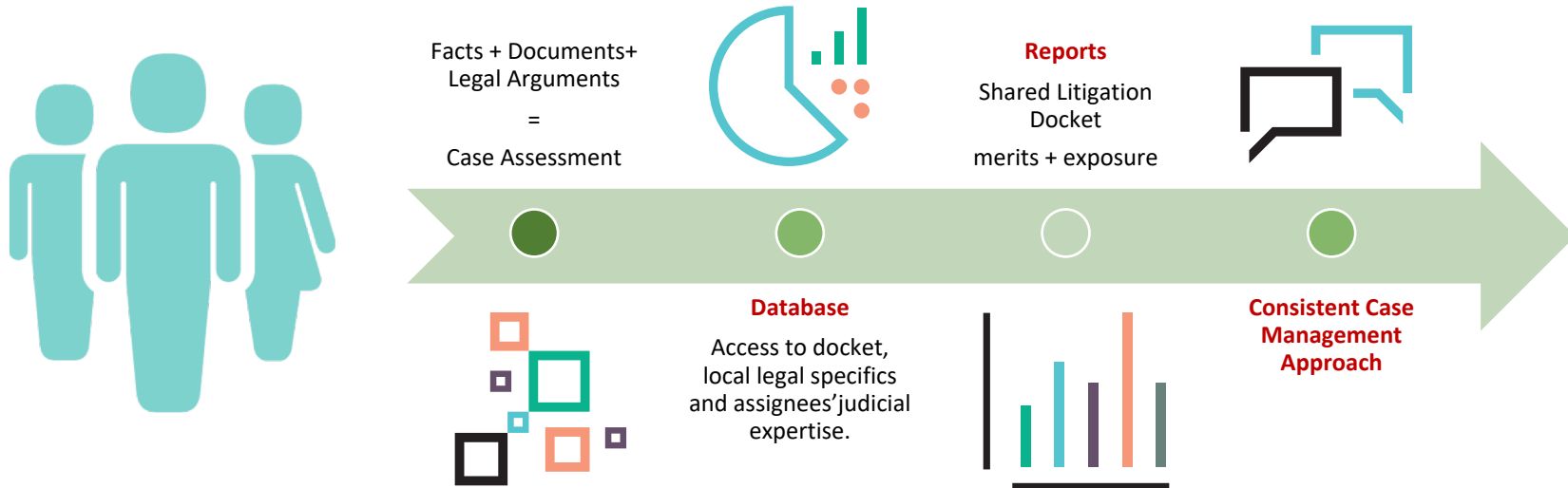
Key data points from the screenshot:

- Amount Claimed U.S. Dollars:** \$2,478,000.00
- Original Conversion Date:** January 10, 2011
- Amount Claimed Non-U.S. UK Pound currency:** 1,500,000.00
- Converted amount:** \$2,478,000.00
- Damages Estimated:** \$2M US or more
- FAS Status Against:** Settled
- Potential Exposure:** Potential exposure \$1M - \$4.9M
- FAS Low U.S. Dollars:** \$800,000.00

Arrows indicate the flow of information and relationships between the different currency and status fields.

Case Management

Litigation Management Model



Data security and its challenges



Information Management

1. A common language – data models
2. Use case – litigation management
3. Use case – document management

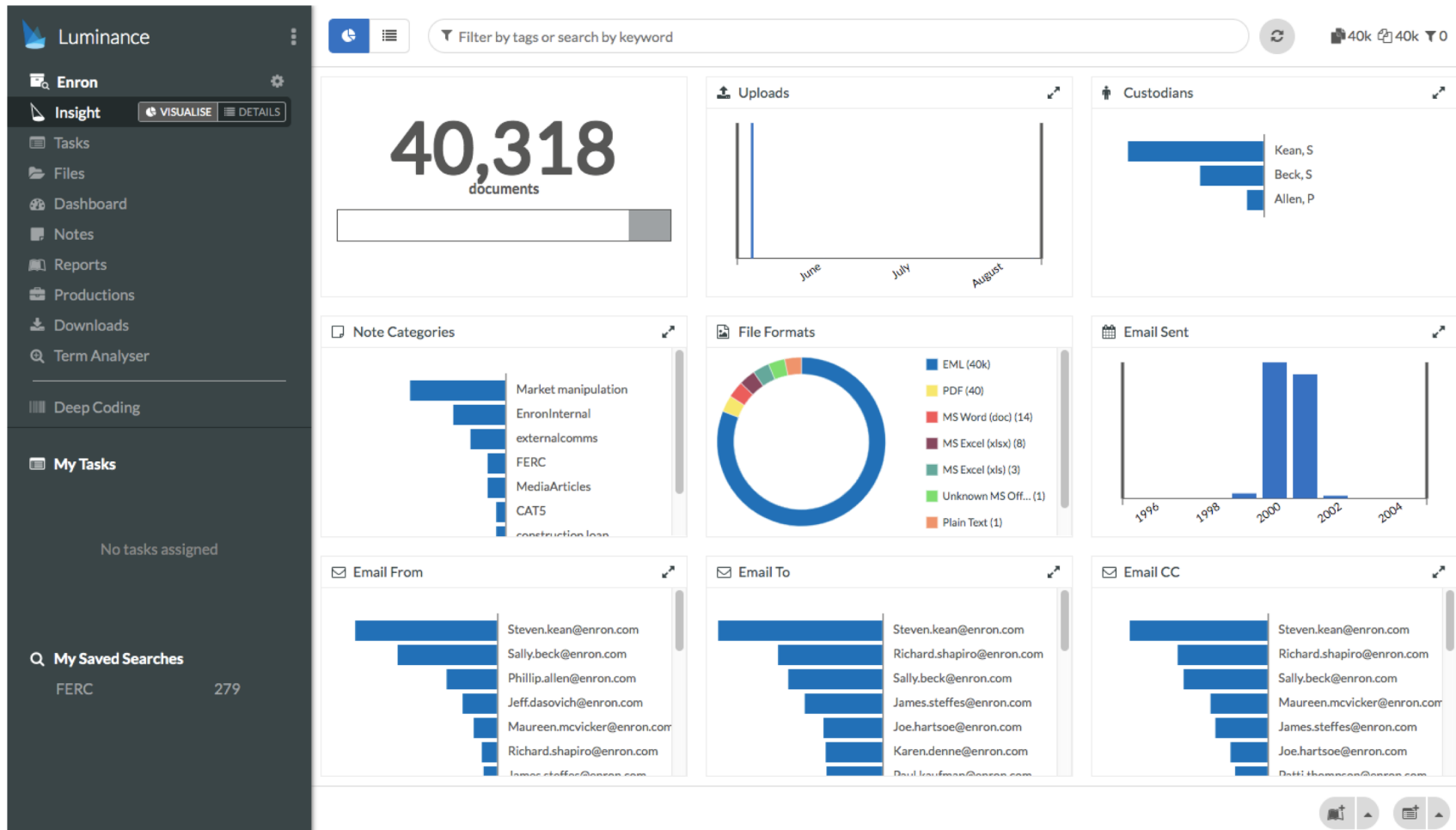
Legal Tech Market Map

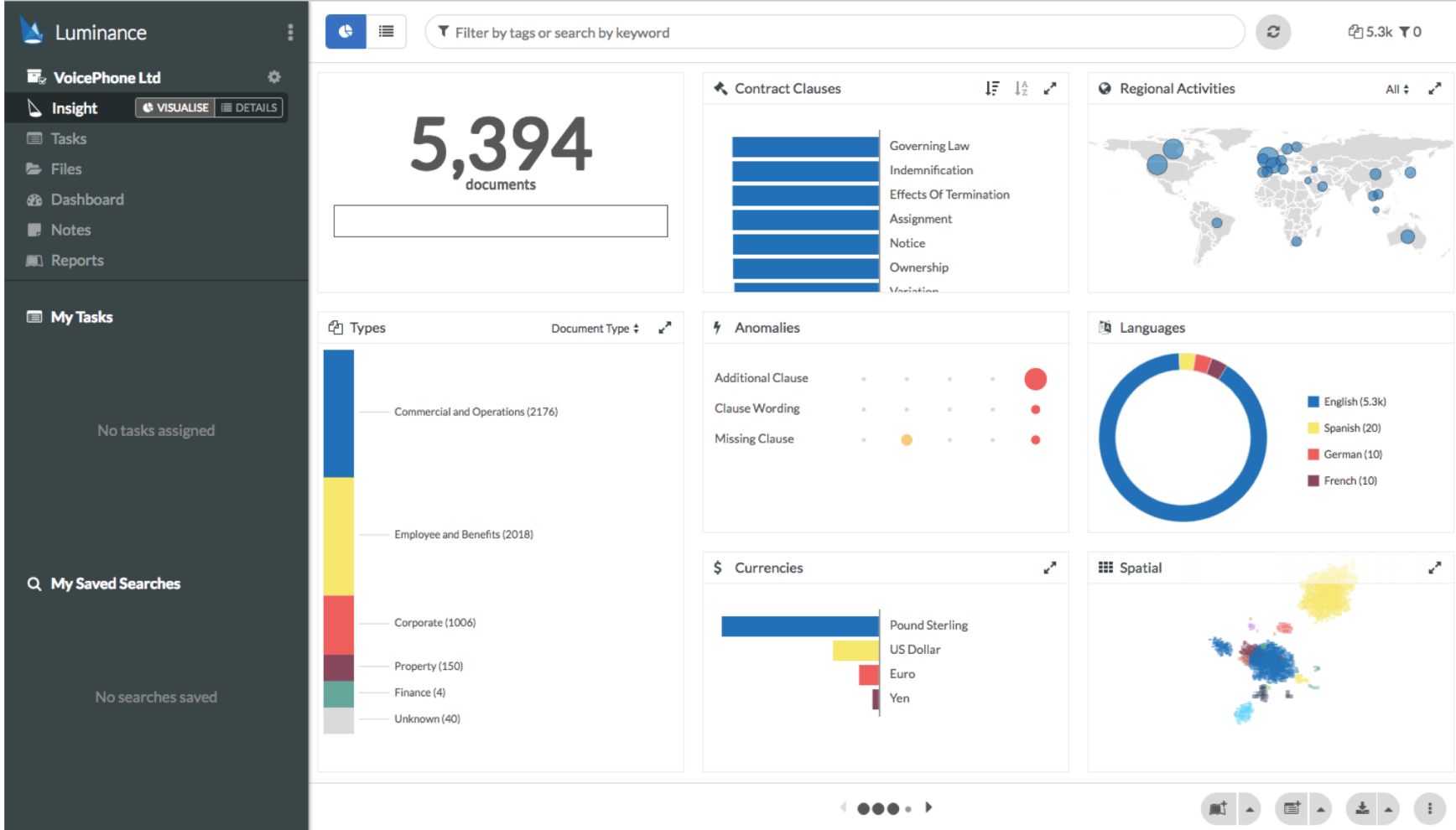


1 Note: this landscape is intended to be a representative sampling and is not an exhaustive list.
Please direct inquiries to kirk@catalyst.com

CATALYST
INVESTORS

Insight. Research. Results.





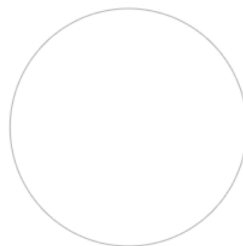


Dashboard

Analysis Report

5,394

documents

☐ Review Unassigned (5.3k)

0

tasks

No tasks



8

notes



Activity

Period: All



17h 16m

Total time spent viewing

67

Documents viewed

15m 28s

Average per document

1m 21s

Average per page

User	Documents Viewed	Time Spent	Notes	Progress
------	------------------	------------	-------	----------

Priya Bains



-

-

Alexander R...



-

-

arrun harker



-

-

Frederick Go...



-

-

Clementine ...



-

-

Frederica Kit



-

-

Questions?