

# Session 19: Data overload? Data protection - GDPR and beyond

## *EU policy horizon considerations*

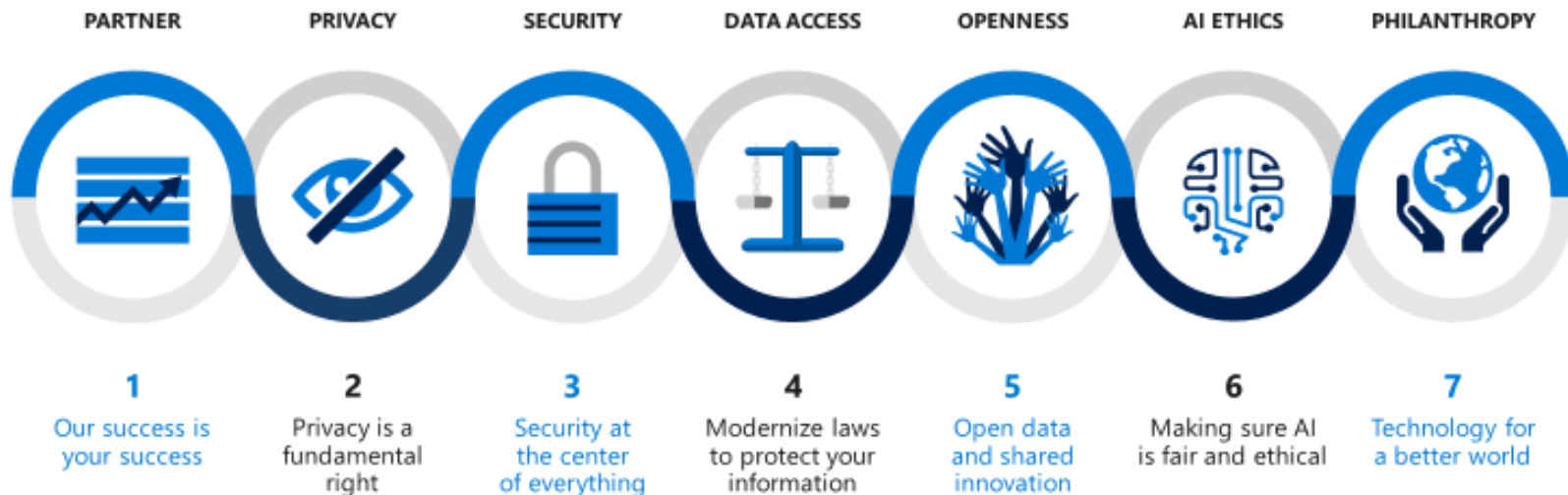
Jeremy Rollison  
Director, EU Government Affairs  
Microsoft CELA



Technology is driving  
change like never  
before ... but trust  
is essential



# 7 Microsoft priorities for customer success



# Our technology and policies evolve constantly to keep pace with maturing privacy laws



We mobilized thousands of our best engineers and legal experts to develop processes and technology to help our customers meet their GDPR obligations



But GDPR is still young—we will continue to refine our approach as the new EU law and others like it around the world develop



We are doing this to help you meet the expectations of our customers, regulators, and business partners



# EU Policy landscape - post-GDPR:

## Current term, ongoing

- ~~General Data Protection Regulation (GDPR)~~
  - Ongoing compliance, DPA/EDPB guidance
- ~~Free Flow of Data Regulation~~
  - Interplay with mixed datasets
- **E-privacy Regulation (ongoing)**
  - Overlap(s) with GDPR
- **E-Evidence package (ongoing)**
  - Implications for law enforcement access requests
- **International data transfer mechanisms (ongoing)**
  - ECJ referrals, decisions pending on SCC's, Privacy Shield



# EU Policy landscape - post-GDPR:

Next term, upcoming

- **EU & AI – Ethics guidelines, policy & investment recommendations**
  - Impact(s) on GDPR interpretation, possibility of new proposals
  - Algorithm transparency, Facial Recognition?
- **Data access, data sharing**
  - Sector-by-sector or horizontal approach
- **NIS Directive – Review**
  - Likely expanded scope, data breach overlap



# Example- E-Privacy Regulation

## Core Issues & potential impacts



Interplay of confidentiality and data protection principles & overlap with GDPR

No real distinction drawn between networks and OTTs

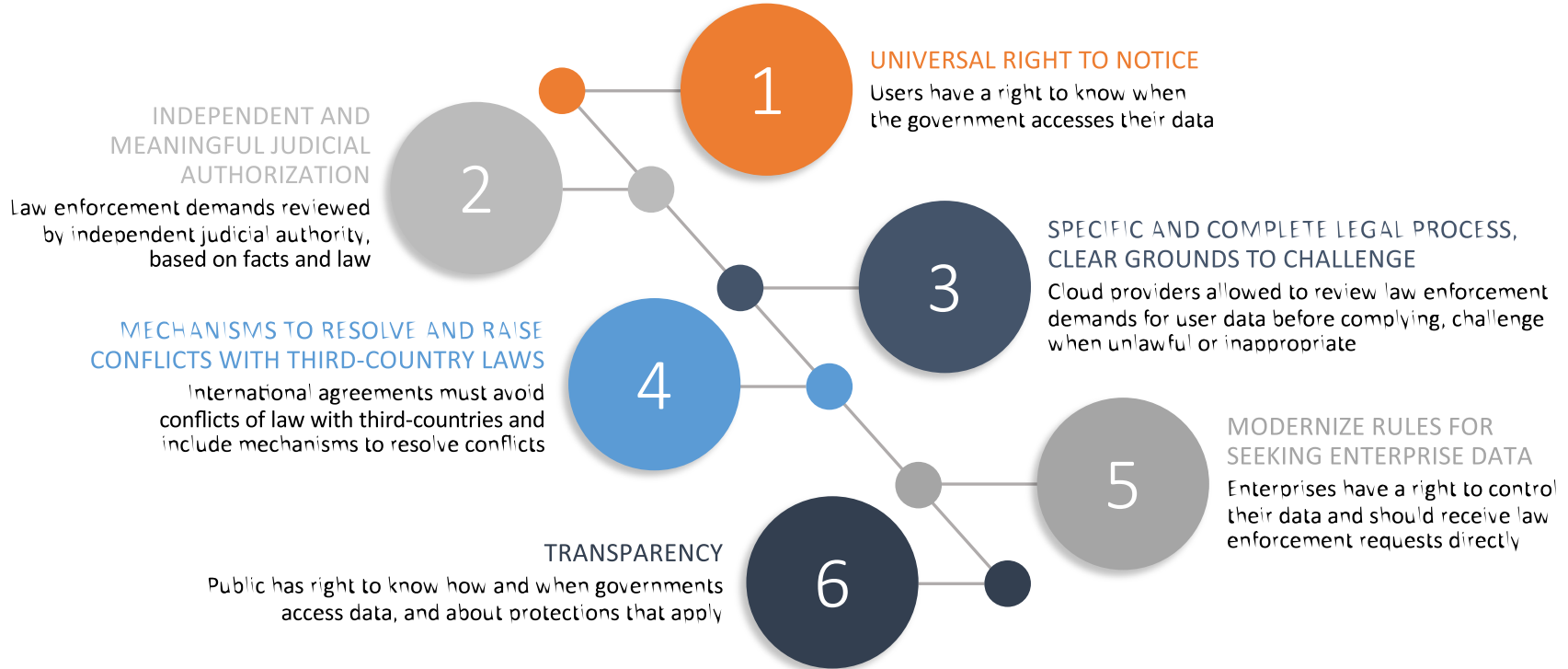
Assumes all communication data is to be treated as sensitive

Convergence of service features will increase legal uncertainty in compliance and enforcement

AI models may not be trained with European data

# Example - E-evidence Package

Six principles we believe must regulate government access to private data



# Thank you